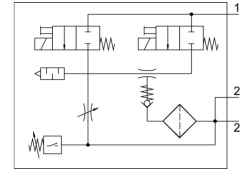


Vacuum generator VADMI-70-LS-P

Part number: 171055

FESTO



Data sheet

Feature	Value
Nominal width of Laval nozzle	0.7 mm
Width dimension	15 mm
Type code	VADMI
Muffler construction type	Closed
Mounting position	Any
Ejector characteristics	High vacuum
Grade of filtration	≤40 µm
Manual override	Non-detenting
Integrated function	Ejector pulse valve, electric Flow control Shut off valve, electric Compressed air filter Air saving function, electrical Non-return valve Vacuum switch
Measured variable	Relative pressure
Measuring principle	Piezoresistive
Switching element function	N/O contact
Switching function	Threshold value comparator
Symbol	00991306
Valve function	Closed
Reverse polarity protection	for all electrical connections
Display type	LED
Setting range hysteresis	-0.6 bar ... -0.1 bar
Setting options	Potentiometer
Switching status indication	Optical
Setting range threshold value	-0.9 bar ... -0.2 bar
Operating pressure	1.5 bar ... 8 bar
Max. vacuum	85 %
Nominal operating pressure	6 bar
Max. overload pressure	5 bar
Air supply time at nominal operating pressure	0.59 s
DC operating voltage range	21.6 V ... 26.4 V
Duty cycle	100%
Switching output	PNP
Certification	RCM compliance mark c UL us - Recognized (OL)

Feature	Value
CE marking (see declaration of conformity)	As per EU EMC directive
Operating medium	Compressed air as per ISO 8573-1:2010 [7:4:4]
Information on operating and pilot media	Operation with oil lubrication not possible
Corrosion resistance class (CRC)	2 - Moderate corrosion stress
Temperature of medium	0 °C ... 60 °C
Degree of protection	IP65
Ambient temperature	0 °C ... 50 °C
Product weight	180 g
Pressure measuring range	0 bar ... 1 bar
Electrical connection	4-pin M8x1 Plug
Type of mounting	Optionally: With through-hole With internal thread
Pneumatic connection 1	M5
Pneumatic connection 3	Pneumatic muffler integrated
Vacuum connection	G1/8
Note on materials	Free of copper and PTFE RoHS-compliant
Seals material	NBR
Female nozzle material	Brass, nickel-plated
Compressed air filter material	PA
Material of filter housing	PC
Housing material	Wrought aluminum alloy
Muffler material	PE POM
Material of piston	POM
Material of jet nozzle	Brass, nickel-plated